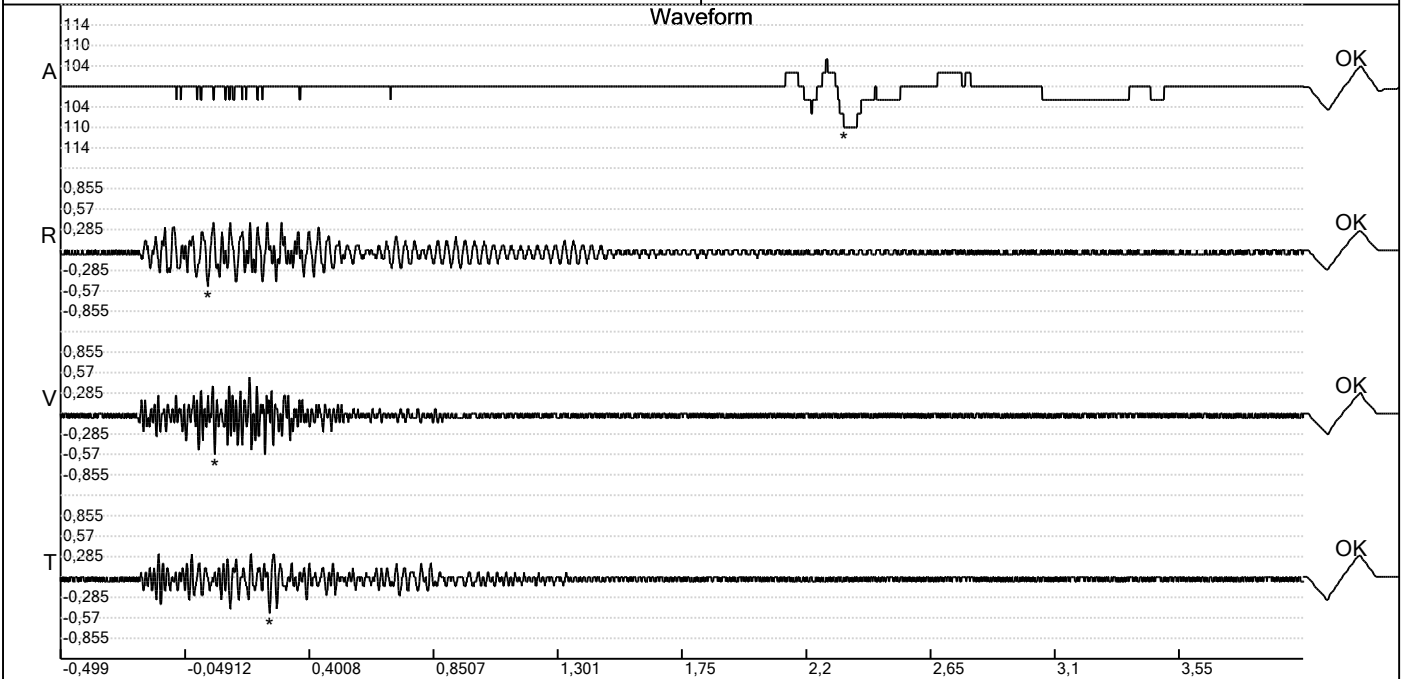


Carrière de BRS
 Comblain -6
 Tir du 06/04/2023
 Sismographe placé au
 261 Halleux
 4710 Comblain-au-Pont

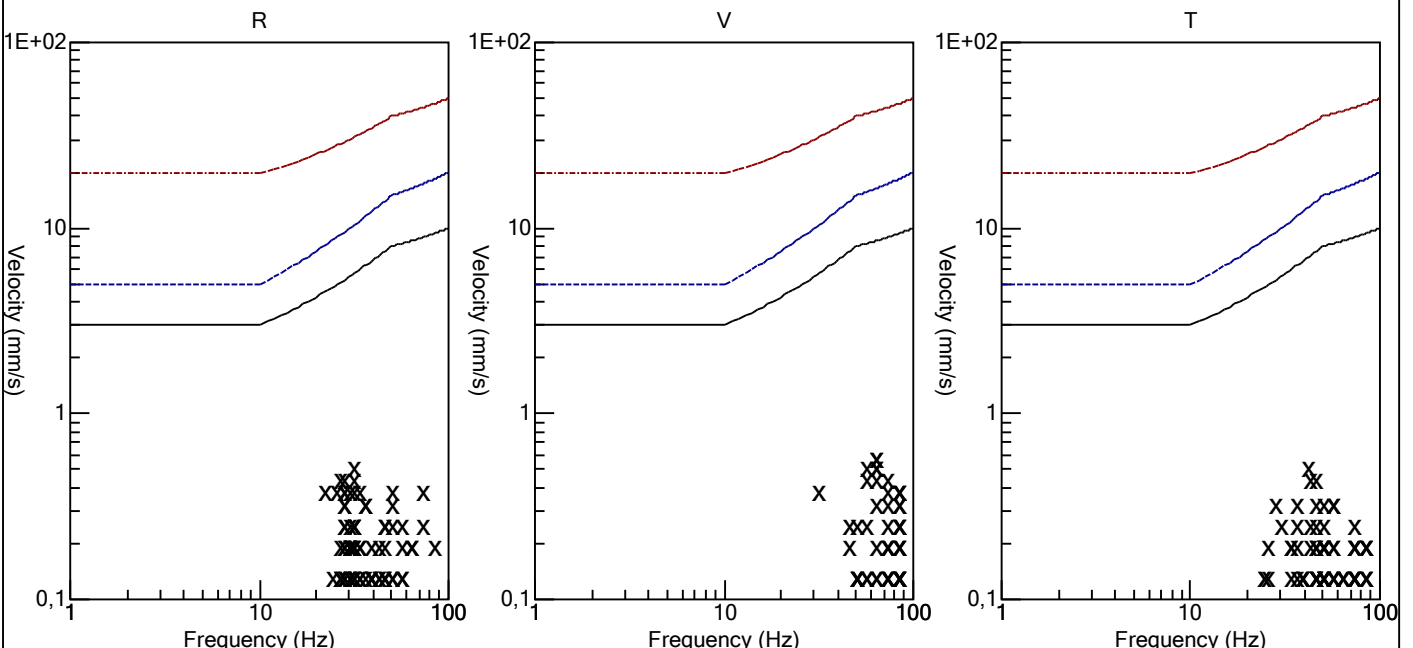
Record: 1789202304061401017.dtb
 Number: 017
 Seismograph: Mini-Seis 1789
 Type of Record: Waveform
 Date: 06-04-23 14:01:00
 Duration: 4,50 Seconds
 Sample Rate: 1024
 Pre-Trigger: 0,5 Seconds
 Seismic Trigger: 0,51 mm/s
 Acoustic Trigger: 142,1 dB
 Seismic Gain: 63,5
 Acoustic Gain: 141,9 dB
 Voltage: 6,6

Peaks and Frequencies
 PPV Maximum (Geo #1): 0,57 mm/s
 Acoustic #1: 109,5 dB @ 3,9 Hz (2,336914 s)
 Radial #1: 0,51 mm/s @ 32,0 Hz (0,03417969 s)
 Vertical #1: 0,57 mm/s @ 64,0 Hz (0,05957031 s)
 Transverse #1: 0,51 mm/s @ 42,6 Hz (0,2578125 s)
 Last Calibration Date: 03-12-21

Graph Information
 Time Range: -0,499 s to 4 s, Intervals: 0,4499 Seconds



Velocity vs. Frequency (DIN 4150-3 Tab 1)



Carrière de BRS
 Comblain -6
 Tir du 06/04/2023
 Sismographe placé au
 261 Halleux
 4710 Comblain-au-Pont

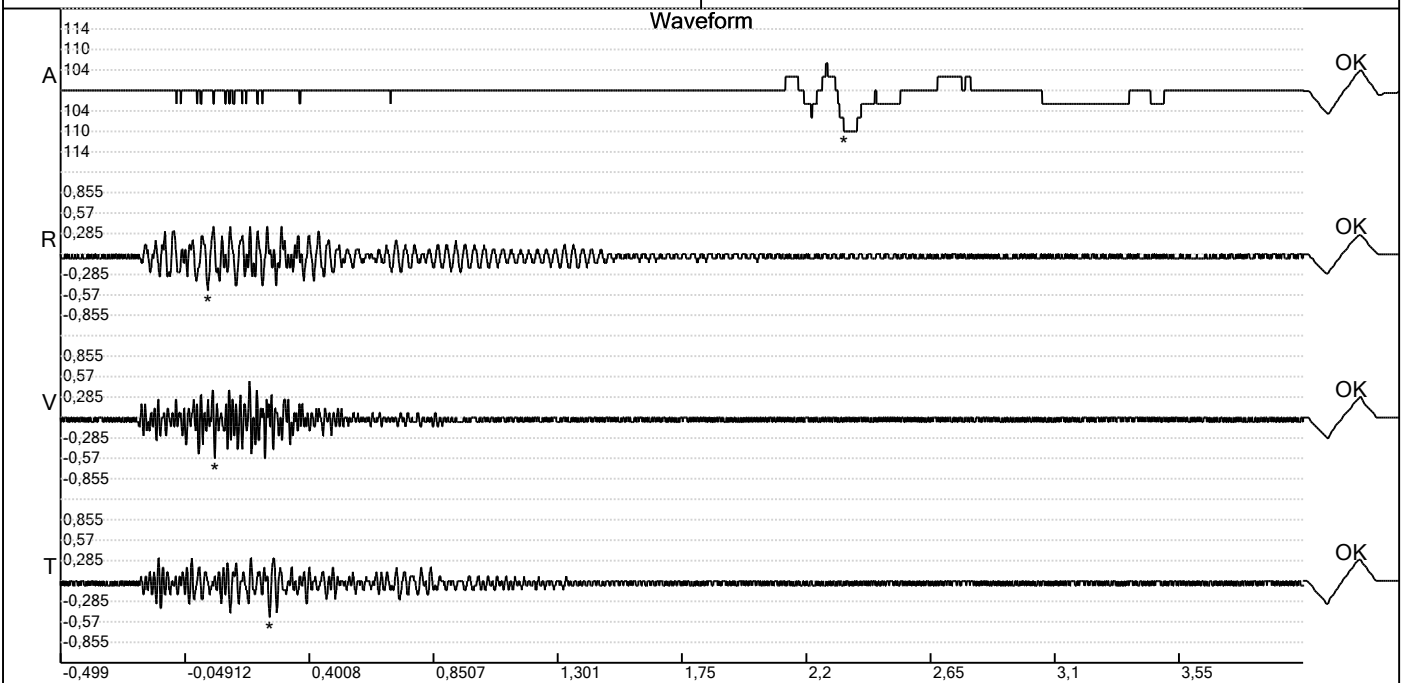
Record: 1789202304061401017.dtb
 Number: 017
 Seismograph: Mini-Seis 1789
 Type of Record: Waveform
 Date: 06-04-23 14:01:00
 Duration: 4,50 Seconds
 Sample Rate: 1024
 Pre-Trigger: 0,5 Seconds
 Seismic Trigger: 0,51 mm/s
 Acoustic Trigger: 142,1 dB
 Seismic Gain: 63,5
 Acoustic Gain: 141,9 dB
 Voltage: 6,6

Peaks and Frequencies

PPV Maximum (Geo #1): 0,57 mm/s
 Acoustic #1: 109,5 dB @ 3,9 Hz (2,336914 s)
 Radial #1: 0,51 mm/s @ 32,0 Hz (0,03417969 s)
 Vertical #1: 0,57 mm/s @ 64,0 Hz (0,05957031 s)
 Transverse #1: 0,51 mm/s @ 42,6 Hz (0,2578125 s)
 Last Calibration Date: 03-12-21

Graph Information

Time Range: -0,499 s to 4 s, Intervals: 0,4499 Seconds



Fast Fourier Transform (Amplitude Spectrum)

